

LED Flex Light

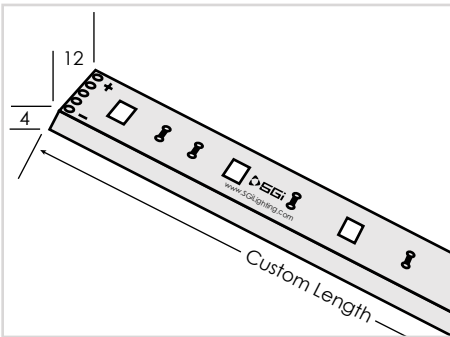
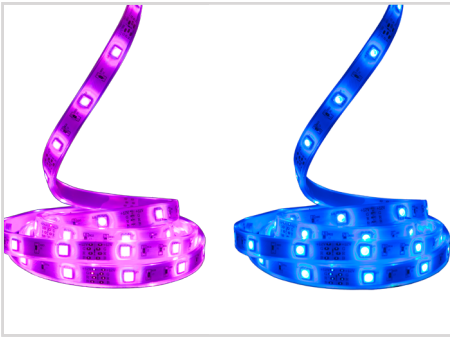
RegularBright 3 Watt RGBW



Medium Output - RegularBright 3 Watt RGBW



LED Flex Light • RegularBright 3 Watt RGBW



Dimensions in millimeters

Length	Custom Length ² cuttable every 4.0"(101.6 mm)		
Operating Voltage	24V DC		
Finish (fin)	Rugged – silicone injected, available in: WHT White PCB BLK Black PCB ¹		
Light Colour (lc) Correlated Colour Temperature (CCT)	RGBW2700K Colour Changing with 2700K RGBW3000K Colour Changing with 3000K RGBW4000K Colour Changing with 4000K RGBW5000K Colour Changing with 5000K Also available in Whites and Single Colours Please see individual product spec sheets		
Beam Angle (ba) Degrees	120°		
Light Output Lumens	RGBW3000K	145.4	per foot
	RGBW4000K	163.4	per foot
	RGBW5000K	173.7	per foot
CRI (cri) Colour Rendering Index	90 for single colour white components only		
IP Rating	IP67		
Dimension Width, Height, Length	W	0.472" 12 mm	
	H	0.157" 4 mm	
	L	Specify maximum length in inches	
Watts	3 Watts per foot		
Input Voltage	AC 100V – 240V, 277V external transformer		
Dimmable	Yes With dimmable transformer MLV, ELV, Phase or 0-10V. Please specify at time of order. Sold separately.		
Operating Temperature	-25°C to +50°C		-13°F to 122°F
Life Lumen Maintenance	50,000 hours		
Warranty	5 Years		

Recommended Tracks

LP1813

GENIE_PROFILE-DOME

See track page for more compatible tracks. See individual track cutsheets for more details.

Part Number Configuration

FLEX	REG_3W	24VDC		90
-------------	---------------	--------------	--	-----------

Category	Family (fam)	Operating Voltage	Finish (fin)	Light Colour (lc)	CRI (cri)
FLEX	REG_3W	24VDC	WHT White BLK Black ¹	RGBW2700K RGBW3000K RGBW4000K RGBW5000K	90

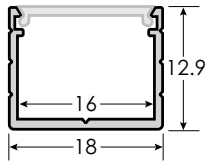


¹ SPECIAL ORDER. Please confirm availability. Allow for 4 – 6 weeks lead time. ² See Connections page(s) for more details.

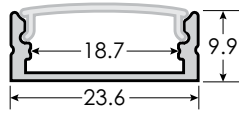


LED Flex Light • RegularBright 3 Watt RGBW • Track Options

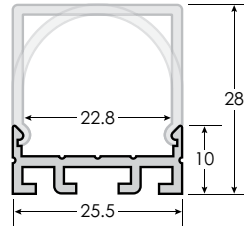
Please visit our **products page** on our website to view all tracks, along with track specifications.



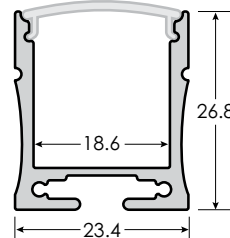
TRACK-LP1813-CST-fin-In



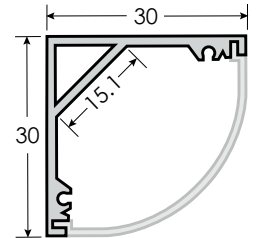
TRACK-LP2410-CST-fin-In



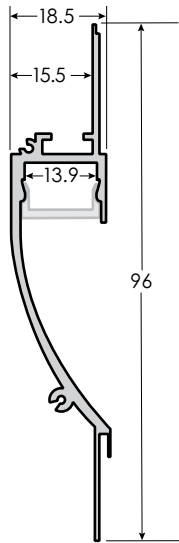
TRACK-LP2610-CST-fin-(OB/OD)



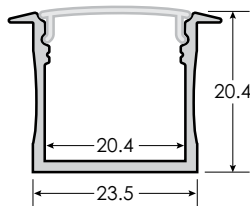
TRACK-UCH2428-CST-fin-In



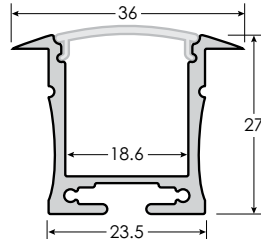
GENIE_PROFILE-DOME-CST-fin-Ic



TRACK-REC1996-CST-fin-Ic



TRACK-REC2421-CST-fin-In



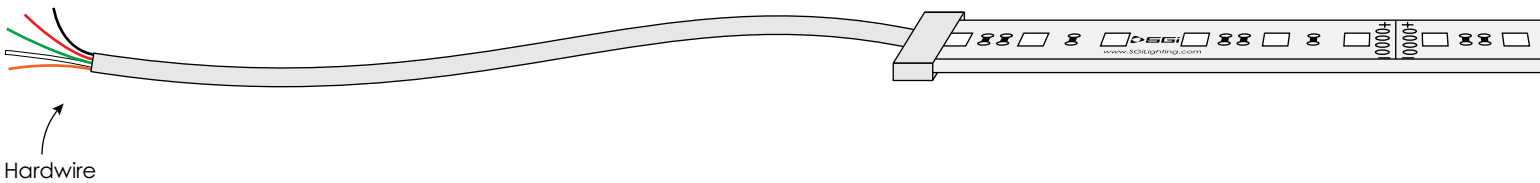
TRACK-REC2428-CST-fin-In



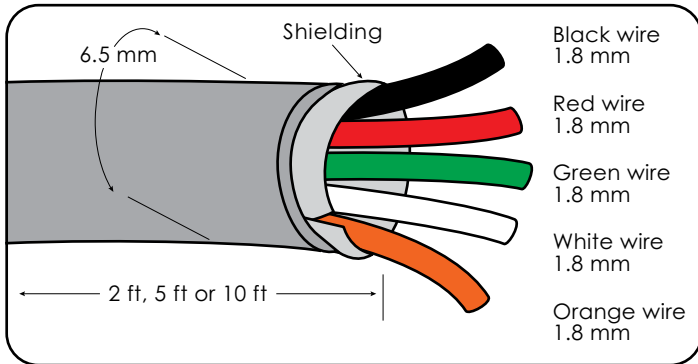


LED Flex Light • RegularBright 3 Watt RGBW • Cable Options

Cable for RGBW – **only available in Hardwire option**
Select 2 Ft, 5 Ft or 10 Ft cable leads



CABLE LEADS USE:
18AWG 5 Conductor Shielded Cable | CABLE-18AWG-GRY-5S



LED Flex Light

RegularBright 3 Watt RGBW

With SGI's RegularBright 3 Watt RGBW, achieve two completely different (but equally beautiful) looks in a single LED Flex Light. RegularBright 3 Watt RGBW provides breathtaking RGB hues and also offers a sophisticated warm white, all on the same LED strip. Enjoy the freedom of switching between colour changing excitement and a dignified 4000K, 3000K or 2700K colour temperature. Pair with LED Track to achieve a directional or diffused lighting effect.

