



the LED lighting source™

COMMERCIAL • LANDSCAPE • ARCHITECTURAL • RESIDENTIAL

15 Brownridge Rd. Unit 6, Halton Hills, ON L7G 0C6 • 905-487-8192 • 1-877-LED-2DAY • SGIlighting.com

Project: \_\_\_\_\_

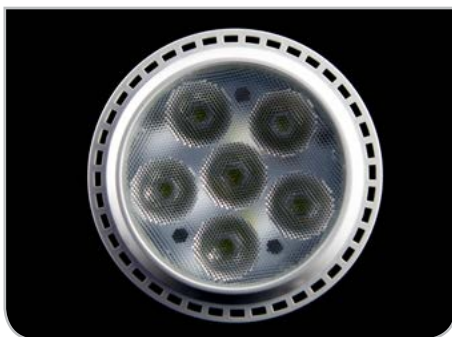
Client: \_\_\_\_\_

Part #: LAMP-14W-PAR30- WHT - ba - lc

Date:      /      /      Qty: \_\_\_\_\_

SPECIFICATION

## LED Lamp • 14 Watt PAR30 Standard



<b>Operating Voltage (ov)</b>	AC 90V-130V / AC 185V-260V - 50/60Hz		
<b>Finish (fin)</b>	WHT	White	
<b>Beam Angle (ba)</b> Degrees	25°	40°*	100°*
<b>Light Colour (lc)</b> Correlated Colour Temperature (CCT)	2700K	Incandescent White	
	3000K	Warm White	
	3500K	Sand White	
	4000K	Neutral White	
	5000K	Cool White	
<b>Light Output</b> Lumens	2700K	550	
	3000K	560	
	3500K	580	
	4000K	600	
	5000K	720	
<b>IP Rating</b>	IP55		
<b>Dimension</b> Diameter, Height	D	3.74"	95 mm
	H	3.63"	92 mm
<b>Housing</b>	Aluminum Alloy		
<b>Watts</b>	14W		
<b>Light Source</b>	6 x 2W LED		
<b>Input Voltage</b>	AC 90V-130V / AC 185V-260V - 50/60Hz		
<b>Dimmable</b>	Yes		
<b>Operating Temperature</b>	-25°C to +50°C		-13°F to 122°F
<b>Life</b> Lumen Maintenance	40,000 hours		

Standard Grade

### Part Number Configuration – LAMP-S-14W-PAR30-fin-ba-lc

Category	Family	Finish (fin)	Beam Angle (ba)	Light Colour (lc)
LAMP S	14W PAR30	WHT White	25° 40°* 100°*	<b>2700K</b> IW <b>3000K</b> WW <b>3500K</b> SW <b>4000K</b> NW <b>5000K</b> CW

\* Available on special order