



the LED lighting source™
 COMMERCIAL • LANDSCAPE • ARCHITECTURAL • RESIDENTIAL

15 Brownridge Rd. Unit 6, Halton Hills, ON L7G 0C6 • 905-487-8192 • 1-877-LED-2DAY • SGiLighting.com

Project: _____

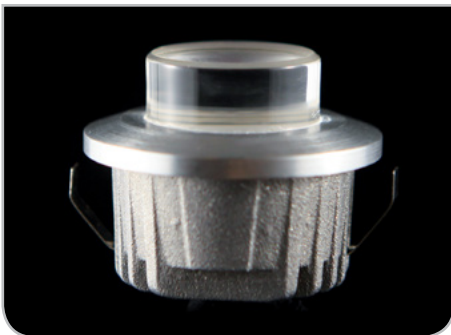
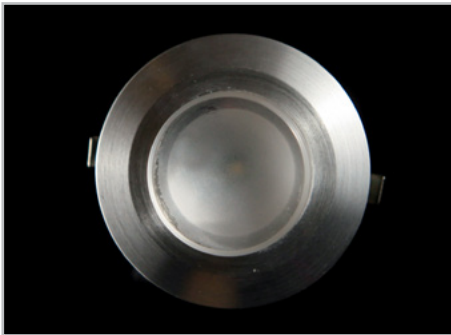
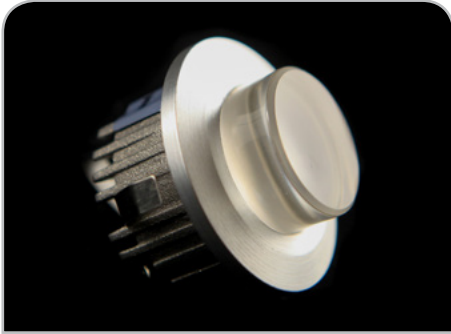
Client: _____

Part #: STEP - P - 1W - FRS - 350MA - SIL - ba - lc

Date: / / Qty: _____

SPECIFICATION

LED Step Light • 1 Watt Frosted



Operating Voltage (ov)	350 mA	Constant Current	
Finish (fin)	SIL	Silver	
Beam Angle (ba) Degrees	38°	60°*	
Light Colour (lc) Correlated Colour Temperature (CCT)	3000K	Warm White	
Light Output Lumens	3000K	67.9	
IP Rating	IP55	IP65*	
Dimension Diameter, Fixture Height (full height), Trim Height, Hole Size	D FH TH HS	1.77" 1.37" 0.62" 1.45"	45 mm 35 mm 16 mm 37 mm
Housing	Aluminum Finish		
Watts	1W		
Light Source	1 x 1W LED		
Input Voltage	AC 100V – 240V, 277V external driver		
Dimmable	Yes With dimmable driver		
Operating Temperature	-25°C to +50°C -13°F to 122°F		
Life Lumen Maintenance	50,000 hours		

Part Number Configuration – STEP-P-1W-FRS-ov-fin-ba-lc

Category	Grade	Family	Operating Voltage (ov)	Finish (fin)	Beam Angle (ba)	Light Colour (lc)
STEP	P-Professional	1W FRS	350MA	SIL Silver	38° 60°*	3000K WW

* Available on special order