



the LED lighting source™
 COMMERCIAL • LANDSCAPE • ARCHITECTURAL • RESIDENTIAL

15 Brownridge Rd. Unit 6, Halton Hills, ON L7G 0C6 • 905-487-8192 • 1-877-LED-2DAY • SGiLighting.com

Project: _____

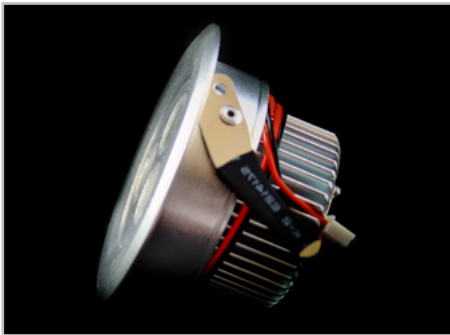
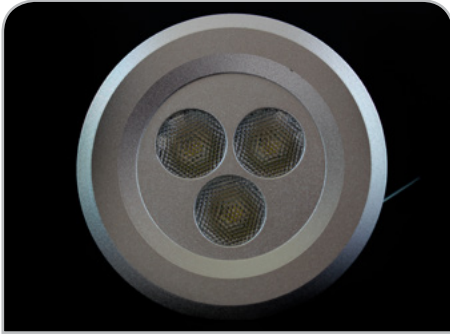
Client: _____

Part #: PUCK – P – 3W – REC – 350MA – SIL – ba – lc

Date: / / Qty: _____

SPECIFICATION

LED Puck Light • 3 Watt Recessed



Operating Voltage (ov)	350 mA	Constant Current	
Finish (fin)	SIL	Silver	
Beam Angle (ba) Degrees	60°	15°*	38°*
Light Colour (lc) Correlated Colour Temperature (CCT)	2700K	Incandescent White	
	3000K	Warm White	
	4000K	Neutral White	
	5000K	Cool White	
	Specify Kelvin (K) for other CCTs*		
	R Red*	G Green*	B Blue* A Amber*
Light Output Lumens	3000K	201.6	
	4000K	241.6	
	5000K	281.7	
IP Rating	IP55	IP65*	
Dimension	D	3.11"	79 mm
Diameter,	FH	1.88"	48 mm
Fixture Height (full height),	TH	0.12"	3 mm
Trim Height, Hole Size	HS	2.56"	65 mm
Housing	Aluminum Finish		
Watts	3W		
Light Source	3 x 1W LED		
Input Voltage	AC 100V – 240V, 277V	external driver	
Dimmable	Yes	With dimmable driver	
Operating Temperature	-25°C to +50°C	-13°F to 122°F	
Life Lumen Maintenance	50,000 hours		

Part Number Configuration – PUCK-P-3W-REC-ov-fin-ba-lc

Category	Grade	Family	Operating Voltage (ov)	Finish (fin)	Beam Angle (ba)	Light Colour (lc)
PUCK	P-Professional	3W REC	350MA	SIL Silver	15°* 38°* 60°	2700K IW 3000K WW 4000K NW 5000K CW R* G* B* A*

* Available on special order