



the LED lighting source™
 COMMERCIAL • LANDSCAPE • ARCHITECTURAL • RESIDENTIAL

15 Brownridge Rd. Unit 6, Halton Hills, ON L7G 0C6 • 905-487-8192 • 1-877-LED-2DAY • SGIlighting.com

Project: _____

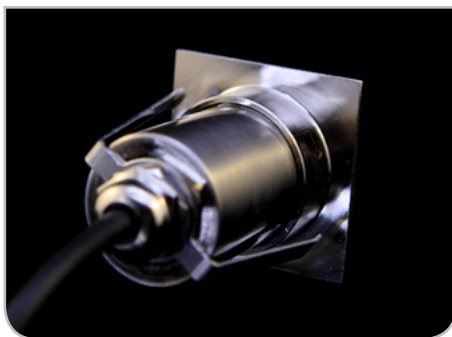
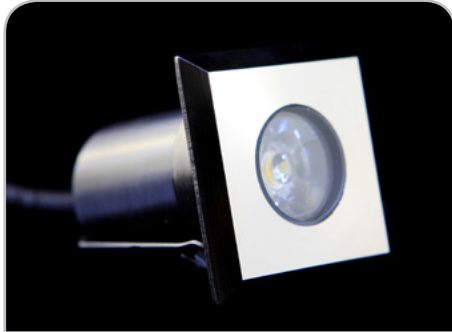
Client: _____

Part #: ING - P - 1W - SQR - 12VDC - SST - ba - lc

Date: / / Qty: _____

SPECIFICATION

LED Inground Light • 1 Watt Square



Operating Voltage (ov)	12V DC	Constant Voltage	
Finish (fin)	SST	Stainless Steel	
Beam Angle (ba) Degrees	60°	15°*	45°*
Light Colour (lc) Correlated Colour Temperature (CCT)	2700K	Incandescent White	
	3000K	Warm White	
	4000K	Neutral White	
	5000K	Cool White	
	RGB	Colour Changing	
	Specify Kelvin (K) for other CCTs*		
	R Red*	G Green*	B Blue* A Amber*
Light Output Lumens	3000K	83	
	4000K	91	
	5000K	100	
IP Rating	IP67		
Dimension Width/Length, Fixture Height, Height with housing Trim Height Hole Size, Hole Size with housing	W/L	1.65"	42 mm
	FH	2.32"	59 mm
	HH	3"	78 mm (with housing)
	TH	0.19"	5 mm
	HS	1.41"	36 mm
	HSH	1.65"	42mm (with housing)
Housing	Stainless Steel		
Watts	1W		
Light Source	1 x 1W LED		
Input Voltage	AC 100V – 240V, 277V external transformer		
Dimmable	Yes With dimmable transformer		
Operating Temperature	-25°C to +50°C		-13°F to 122°F
Life Lumen Maintenance	50,000 hours		

Part Number Configuration – ING-P-1W-SQR-ov-fin-ba-lc

Category	Grade	Family	Operating Voltage (ov)	Finish (fin)	Beam Angle (ba)	Light Colour (lc)
ING	P-Professional	1W SQR	12VDC	SST Stainless Steel	15°* 45°* 60°	2700K IW 3000K WW 4000K NW 5000K CW RGB R* G* B* A*

* Available on special order