



the LED lighting source™

COMMERCIAL • LANDSCAPE • ARCHITECTURAL • RESIDENTIAL

15 Brownridge Rd. Unit 6, Halton Hills, ON L7G 0C6 • 905-487-8192 • 1-877-LED-2DAY • SGIlighting.com

Project: _____

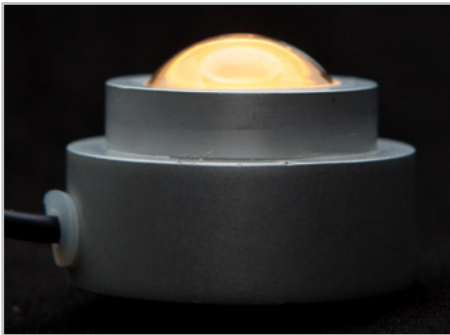
Client: _____

Part #: DOT - P - 1W - REG - 12VDC - SIL - 60 - lc

Date: / / Qty: _____

SPECIFICATION

LED Dot Light • 1 Watt Regular



Operating Voltage (ov)	12V DC	Constant Voltage	
Finish (fin)	SIL	Silver	
Beam Angle (ba) Degrees	60°		
Light Colour (lc) Correlated Colour Temperature (CCT)	2700K	Incandescent White	
	3000K	Warm White	
	4000K	Neutral White	
	5000K	Cool White	
	Specify Kelvin (K) for other CCTs*		
	R Red*	G Green*	B Blue* A Amber*
Light Output Lumens	3000K	80	
	4000K	85	
	5000K	90	
IP Rating	IP65		
Dimension Diameter, Height	D	1.38"	35 mm
	H	0.98"	25 mm
Housing	Aluminum Finish		
Watts	1W		
Light Source	1 x 1W LED		
Input Voltage	AC 100V – 240V, 277V external transformer		
Dimmable	Yes	With dimmable transformer	
Operating Temperature	-25°C to +50°C		-13°F to 122°F
Life Lumen Maintenance	50,000 hours		

Part Number Configuration – DOT-P-1W-REG-ov-fin-ba-lc

Category	Grade	Family	Operating Voltage (ov)	Finish (fin)	Beam Angle (ba)	Light Colour (lc)
DOT	P-Professional	1W REG	12VDC	SIL Silver	60°	2700K IW 3000K WW 4000K NW 5000K CW R* G* B* A*

* Available on special order