



the LED lighting source™
 COMMERCIAL • LANDSCAPE • ARCHITECTURAL • RESIDENTIAL

15 Brownridge Rd. Unit 6, Halton Hills, ON L7G 0C6 • 905-487-8192 • 1-877-LED-2DAY • SGiLighting.com

Project: _____

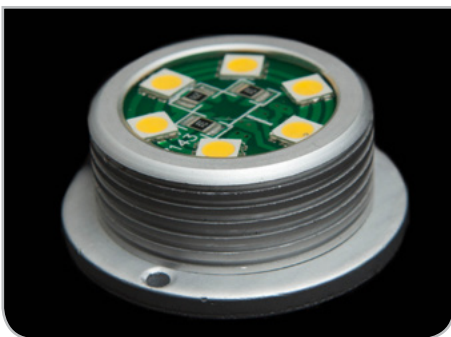
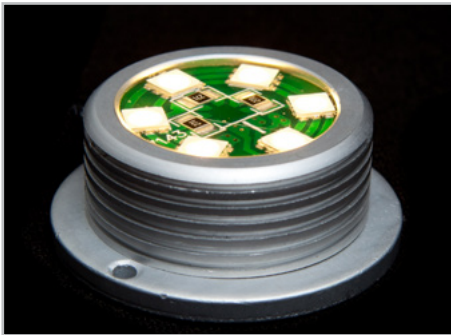
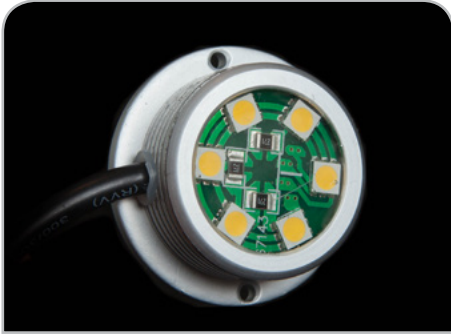
Client: _____

Part #: DOT - P - 1W - MINI - 25VDC - SIL - 120 - lc

Date: / / Qty: _____

SPECIFICATION

LED Dot Light • 1.5 Watt Wide



Operating Voltage (ov)	24V DC	Constant Voltage	
Finish (fin)	SIL	Silver	
Beam Angle (ba) Degrees	120°		
Light Colour (lc) Correlated Colour Temperature (CCT)	2700K	Incandescent White	
	3000K	Warm White	
	4000K	Neutral White	
	5000K	Cool White	
	Specify Kelvin (K) for other CCTs*		
	R Red*	G Green*	B Blue* A Amber*
Light Output Lumens	3000K	116	
	4000K	123	
	5000K	130	
IP Rating	IP65		
Dimension Diameter, Height	D	2.68"	68 mm
	H	2.13"	54 mm
Housing	Aluminum Finish		
Watts	1.5W		
Light Source	6 x 0.25W LED		
Input Voltage	AC 100V – 240V, 277V external transformer		
Dimmable	Yes With dimmable transformer		
Operating Temperature	-25°C to +50°C		-13°F to 122°F
Life Lumen Maintenance	50,000 hours		

Part Number Configuration – DOT-P-1W-WIDE-ov-fin-ba-lc

Category	Grade	Family	Operating Voltage (ov)	Finish (fin)	Beam Angle (ba)	Light Colour (lc)
DOT	P-Professional	1W WIDE	24VDC	SIL Silver	120°	2700K IW 3000K WW 4000K NW 5000K CW R* G* B* A*

* Available on special order